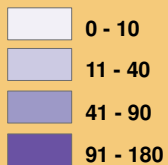


Number of persons age 85 and older receiving Outreach Support Services*

● 1

*Outreach Support Services include the following programs and organizations: Bright Spot, Geriatric Outreach, North Shore Caregiver Support, North Shore Volunteers, NSNH/John Braithwaite, and Seniors' Hub Services. Clients may receive one or more of the listed services.

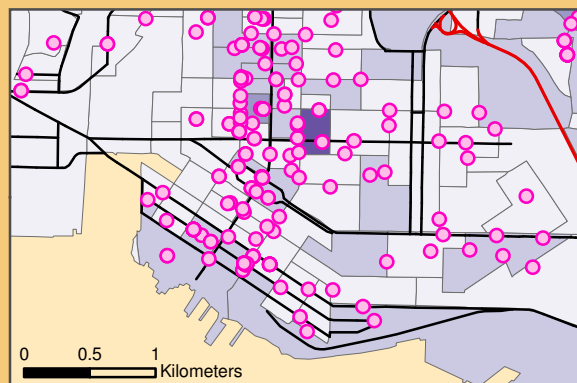
Number of persons age 85 and older within each DA^{a, c}



^aDissemination Area (DA): small geographic area composed of one or more neighbouring blocks, with a population of 400 to 700 persons.

^cExcluding Bowen Island and Lions Bay.

- **TransCanada Highway**
- **Streets**
- = **Lions Gate Bridge**



City of North Vancouver



Persons Age 85 and Older Receiving Outreach Support Services

(North Shore, Burrard Inlet, BC)

Seniors in Communities Project, 2007-2008

North Shore Seniors Coalition



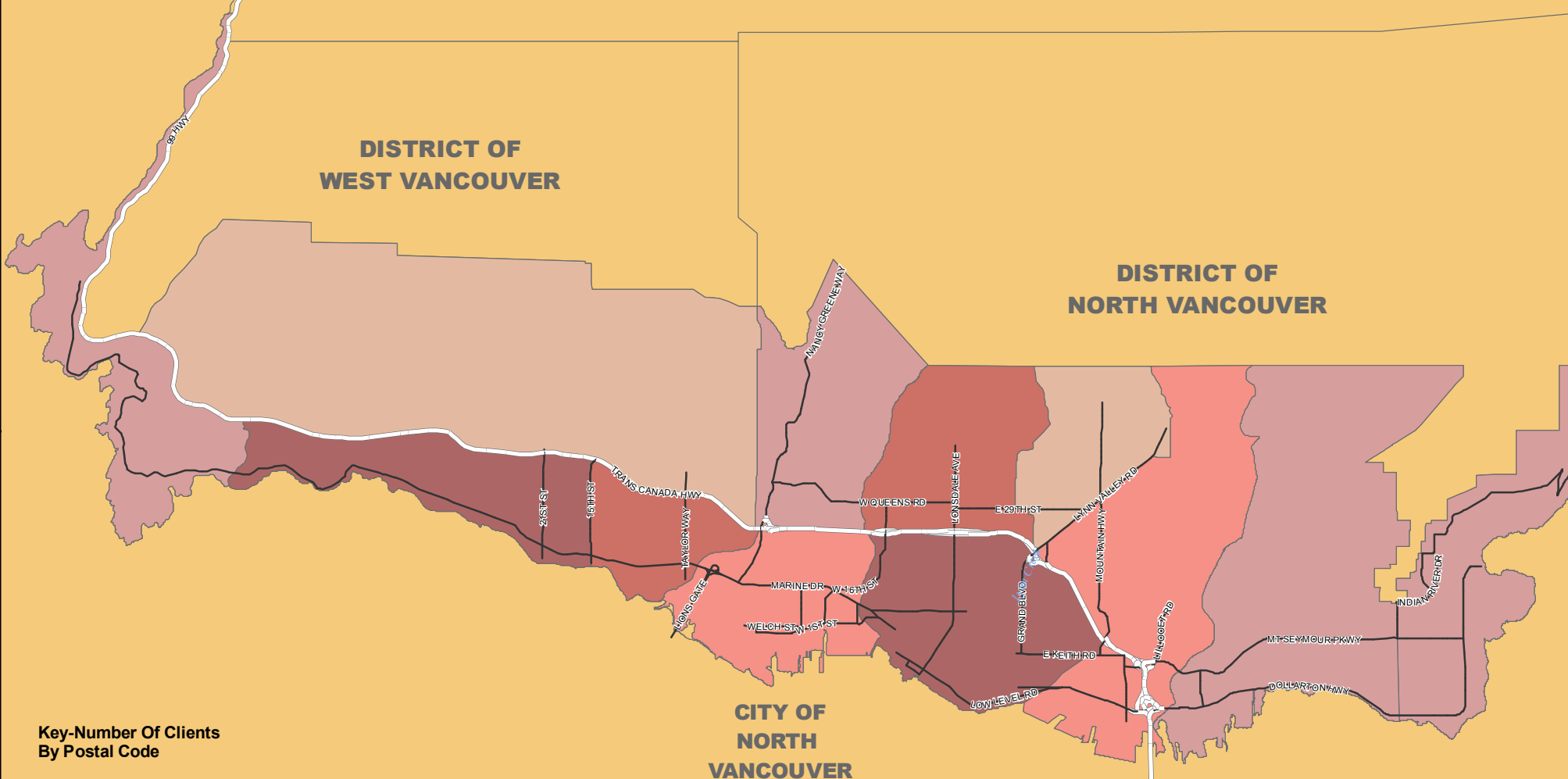
Sources: Statistics Canada
 Services for Seniors Guide (2007), North Shore Community Resources
 Population data provided by District of North Vancouver
 (Statistics Canada 2006 Census data)
 Neighbourhood boundaries provided by District of North Vancouver
 Streets data provided by District of North Vancouver
 Colour scheme selected from ColorBrewer
 Map prepared by North Shore Community Resources

Public Home Support Service By Postal Code

(North Shore, Burrard Inlet, B.C.)

Seniors in Communities Project, 2007-2008

North Shore Seniors Coalition



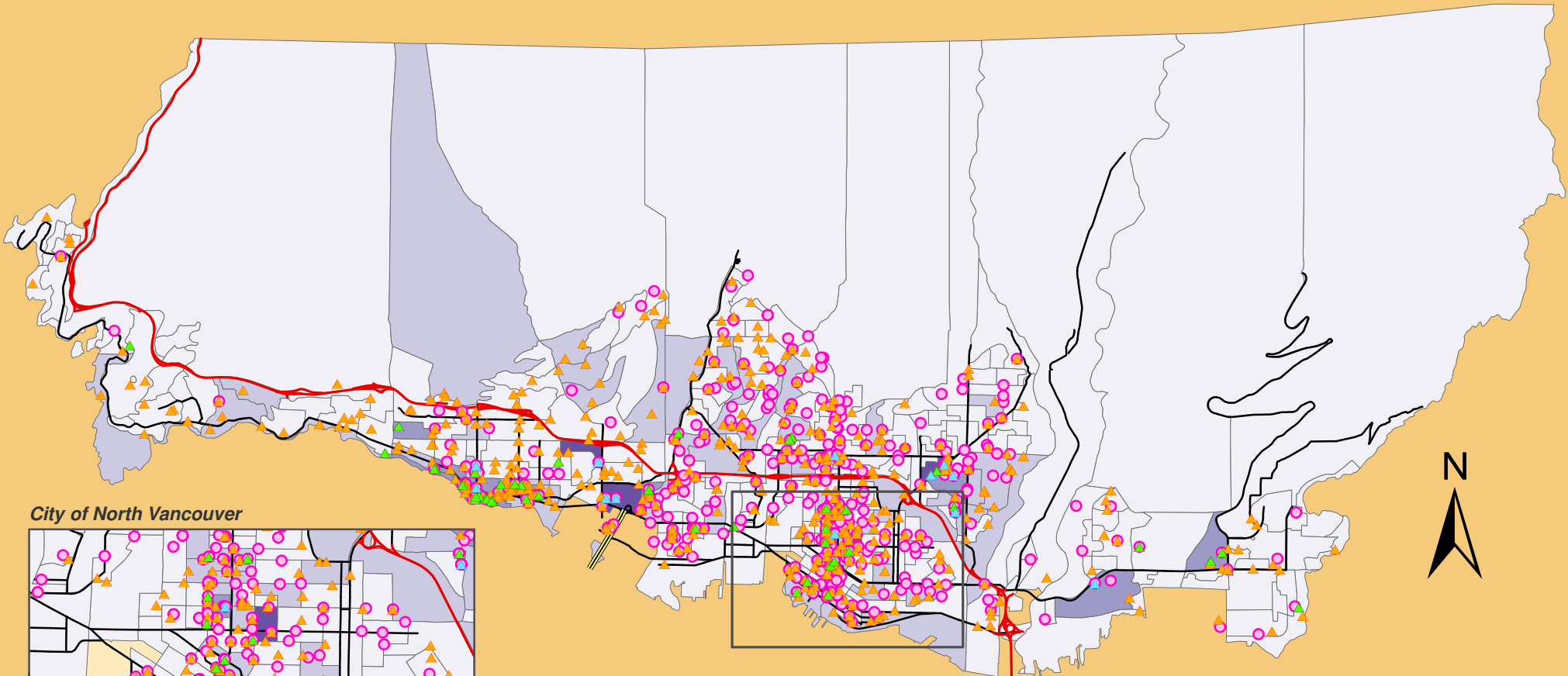
Key-Number Of Clients By Postal Code

| | |
|--|----------|
| | 0 - 20 |
| | 21 - 40 |
| | 41 - 60 |
| | 61 - 80 |
| | 81 - 100 |

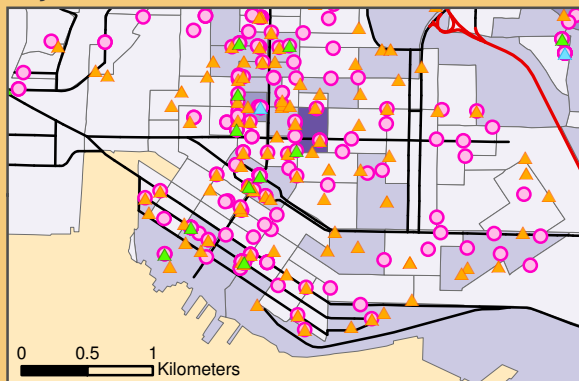
- Trans Canada Highway
- Major Streets



Sources: Statistics Canada
 Vancouver Coastal Health Authority
 Population data provided by District of North Vancouver (Statistics Canada 2006 Census data)
 Postal Code boundaries provided by District of North Vancouver
 Streets data provided by District of North Vancouver (BC TRIM data)
 Colour scheme selected from ColorBrewer
 Map prepared by District of North Vancouver



City of North Vancouver



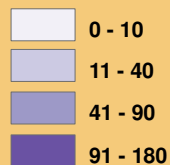
Emergency Room Visits made by Persons Age 85 and Older Receiving Outreach Support Services according to Residence (North Shore, Burrard Inlet, BC)

Seniors in Communities Project, 2007-2008

North Shore Seniors Coalition



Number of persons age 85 and older within each DA^{a, c}



^aDissemination Area (DA): small geographic area composed of one or more neighbouring blocks, with a population of 400 to 700 persons.

^cExcluding Bowen Island and Lions Bay.

Number of emergency room visits* made by persons age 85 and older according to residence



*Lions Gate Hospital data: includes visits receiving no treatment and those going on to acute in-patient admission; excludes DOA and includes those expired in the emergency room.

Number of persons age 85 and older receiving Outreach Support Services**



**Outreach Support Services include the following programs and organizations: Bright Spot, Geriatric Outreach, North Shore Caregiver Support, North Shore Volunteers, NSNH/John Braithwaite, and Seniors' Hub Services. Clients may receive one or more of the listed services.



Sources: Statistics Canada Services for Seniors Guide (2007), North Shore Community Resources Vancouver Coastal Health Authority Population data provided by District of North Vancouver (Statistics Canada 2006 Census data) Neighbourhood boundaries provided by District of North Vancouver Streets data provided by District of North Vancouver Colour scheme selected from ColorBrewer Map prepared by North Shore Community Resources