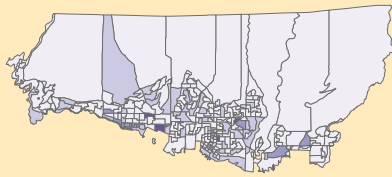


Health Services

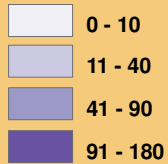
(West North Shore, Burrard Inlet, BC)

Seniors in Communities Project, 2007-2008

North Shore Seniors Coalition



Number of persons age 85 and older within each DA^{e, c}



^eDissemination Area (DA): small geographic area composed of one or more neighbouring blocks, with a population of 400 to 700 persons.

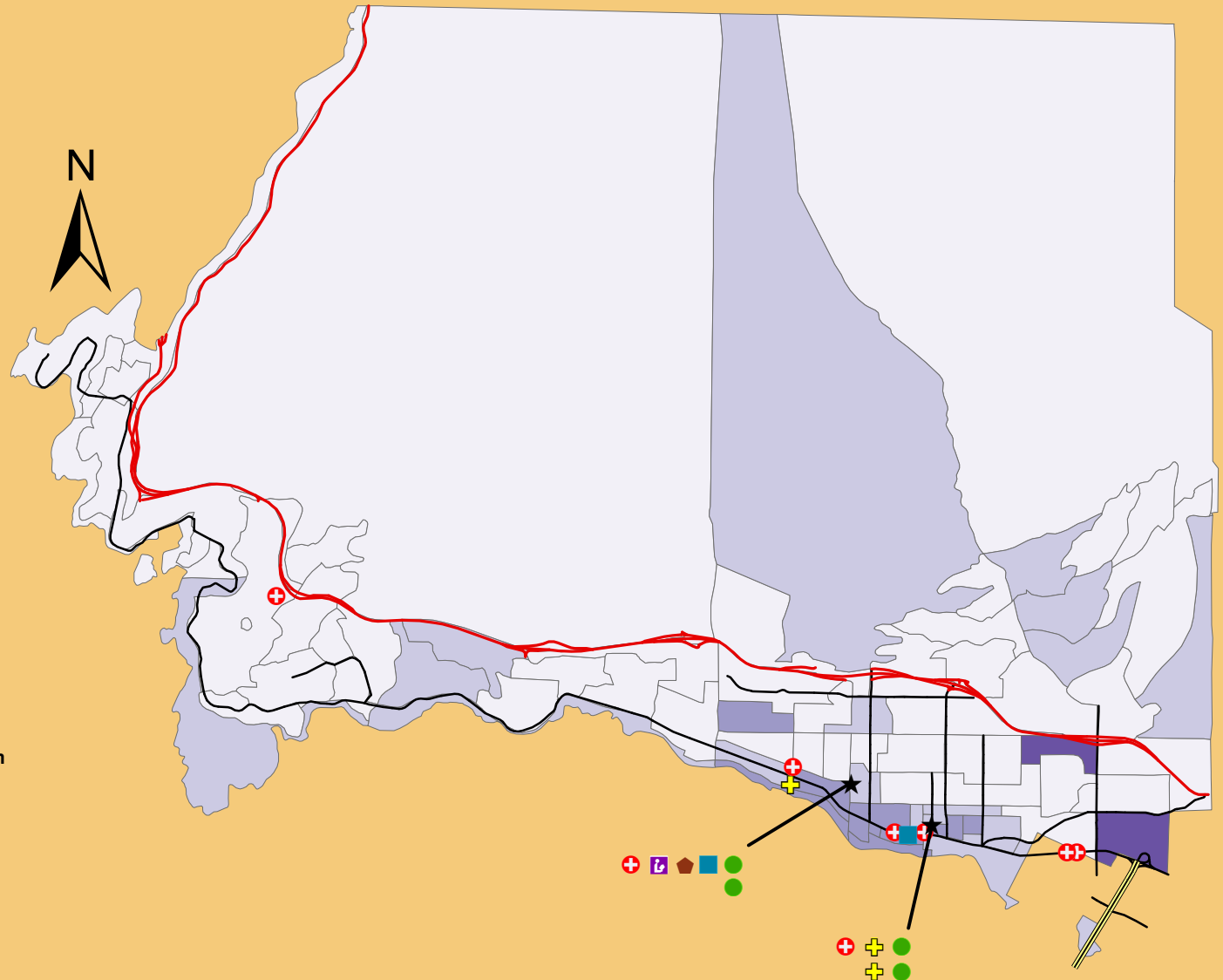
^cExcluding Bowen Island and Lions Bay.

- TransCanada Highway
- Streets
- Lions Gate Bridge
- Multi-Service Node
- Medical Clinic
- Medical Labs and X-Ray Services
- Medical Specialist
- Community Health Centre
- Adult Day Centre
- Counselling, Support and Mental Health Program

*Services not necessarily in the same building.



Sources: Statistics Canada
 Vancouver Coastal Health Authority
 Population data provided by District of North Vancouver (Statistics Canada 2006 Census data)
 Neighbourhood boundaries provided by District of North Vancouver
 Streets data provided by District of North Vancouver
 Colour scheme selected from ColorBrewer
 Map prepared by North Shore Community Resources

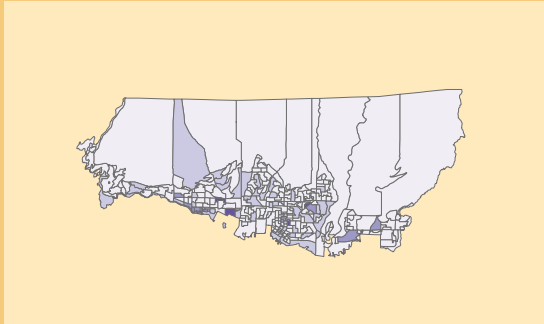


Health Services

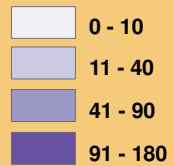
(Central North Shore, Vancouver, BC)

Seniors in Communities Project, 2007-2008

North Shore Seniors Coalition



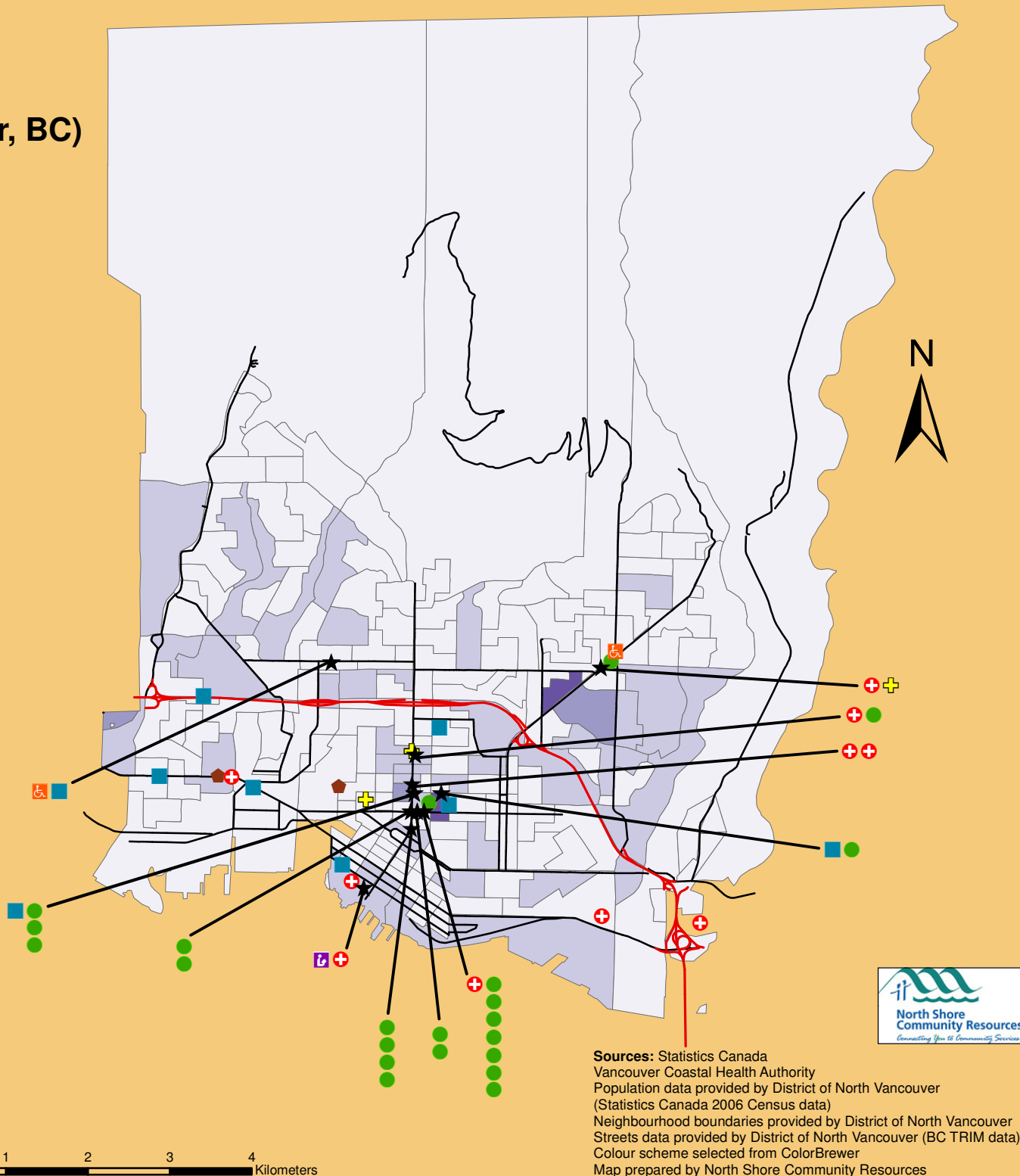
Number of persons age 85 and older within each DA^{e, c}



^eDissemination Area (DA): small geographic area composed of one or more neighbouring blocks, with a population of 400 to 700 persons.

^cExcluding Bowen Island and Lions Bay.

- TransCanada Highway
- Streets
- Multi-Service Node
- Medical Clinic
- Medical Labs and X-Ray Services
- Medical Specialist
- Community Health Centre
- Adult Day Centre
- Counselling and Mental Health Program
- Medical Equipment



Sources: Statistics Canada
 Vancouver Coastal Health Authority
 Population data provided by District of North Vancouver
 (Statistics Canada 2006 Census data)
 Neighbourhood boundaries provided by District of North Vancouver
 Streets data provided by District of North Vancouver (BC TRIM data)
 Colour scheme selected from ColorBrewer
 Map prepared by North Shore Community Resources

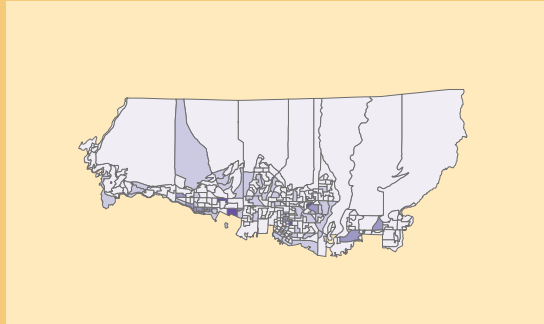


Health Services

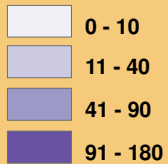
(East North Shore, Vancouver, BC)

Seniors in Communities Project, 2007-2008

North Shore Seniors Coalition



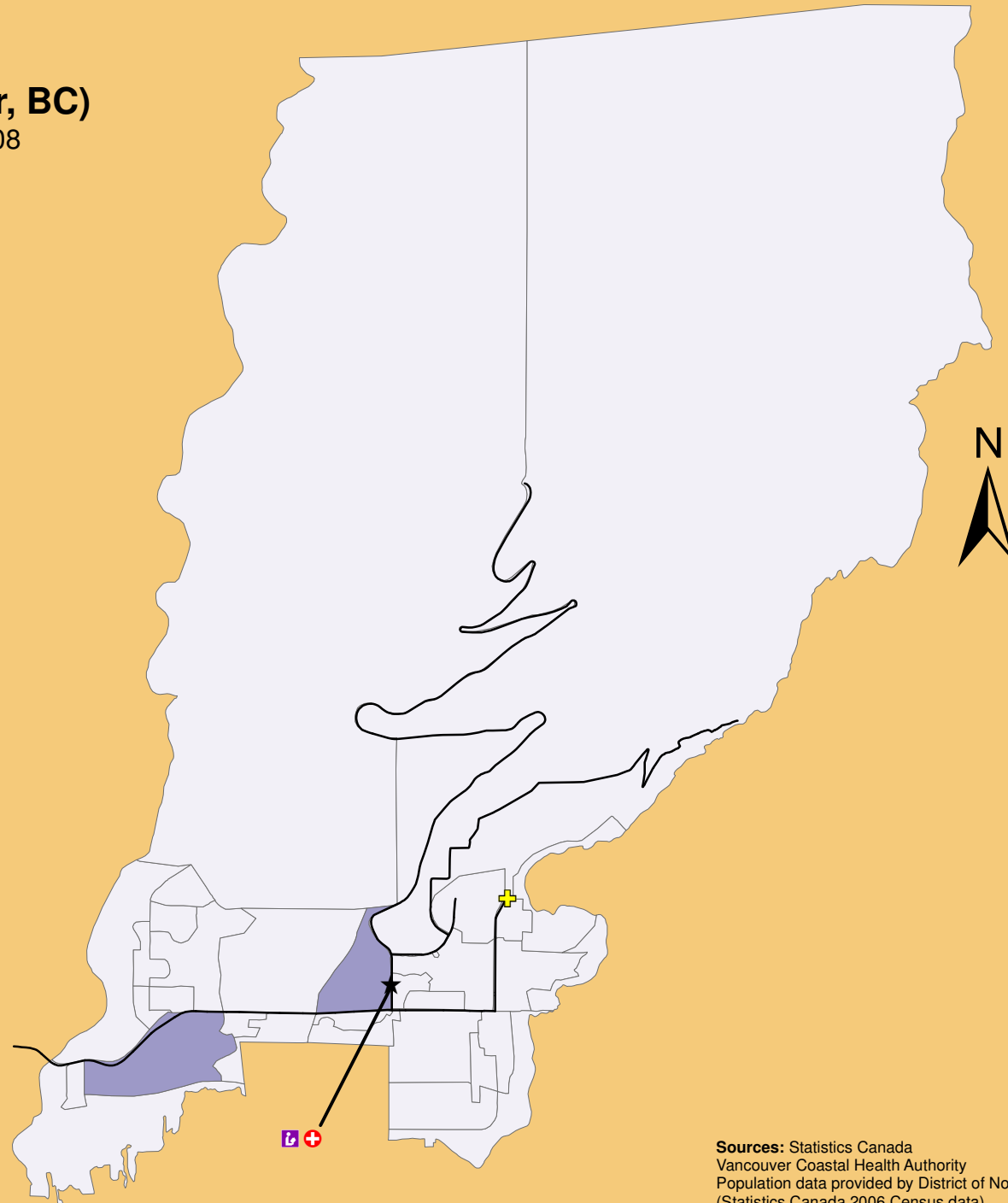
Number of persons age 85 and older within each DA^{e, c}



^eDissemination Area (DA): small geographic area composed of one or more neighbouring blocks, with a population of 400 to 700 persons.

^cExcluding Bowen Island and Lions Bay.

- Streets
- Multi-Service Node
- Medical Clinic
- Medical Labs and X-Ray Services
- Community Health Centre



Sources: Statistics Canada
 Vancouver Coastal Health Authority
 Population data provided by District of North Vancouver
 (Statistics Canada 2006 Census data)
 Neighbourhood boundaries provided by District of North Vancouver
 Streets data provided by District of North Vancouver (BC TRIM data)
 Colour scheme selected from ColorBrewer
 Map prepared by North Shore Community Resources

0 0.45 0.9 1.8 2.7 3.6 Kilometers