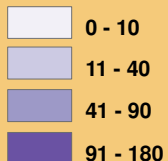
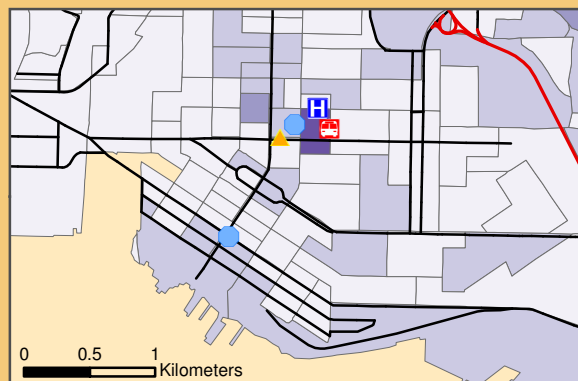


Number of persons age 85 and older within each DA^{e, c}



^eDissemination Area (DA): small geographic area composed of one or more neighbouring blocks, with a population of 400 to 700 persons.
^cExcluding Bowen Island and Lions Bay.

- TransCanada Highway
- Streets
- Lions Gate Bridge
- Ambulance Services
- Fire Hall
- Hospital
- Police



City of North Vancouver

Emergency Services

(North Shore, Vancouver, BC)

Seniors in Communities Project, 2007-2008

North Shore Seniors Coalition



Sources: Statistics Canada
 The Green Book, North Shore Community Resource
 Vancouver Coastal Health Authority
 Population data provided by District of North Vancouver
 (Statistics Canada 2006 Census data)
 Neighbourhood boundaries provided by District of North Vancouver
 Streets data provided by District of North Vancouver (BC TRIM data)
 Colour scheme selected from ColorBrewer
 Map prepared by North Shore Community Resources

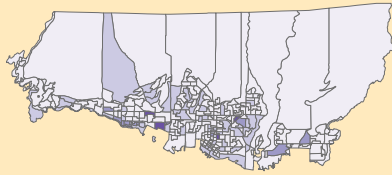


Emergency Room Visits made by Persons Age 85 and Older according to Residence (2006)

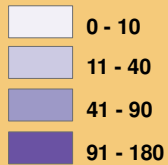
(West North Shore, Vancouver, BC)

Seniors in Communities Project, 2007-2008

North Shore Seniors Coalition

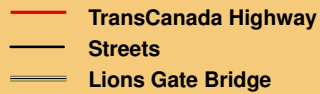


Number of persons age 85 and older within each DA^{e, c}



^eDissemination Area (DA): small geographic area composed of one or more neighbouring blocks, with a population of 400 to 700 persons.

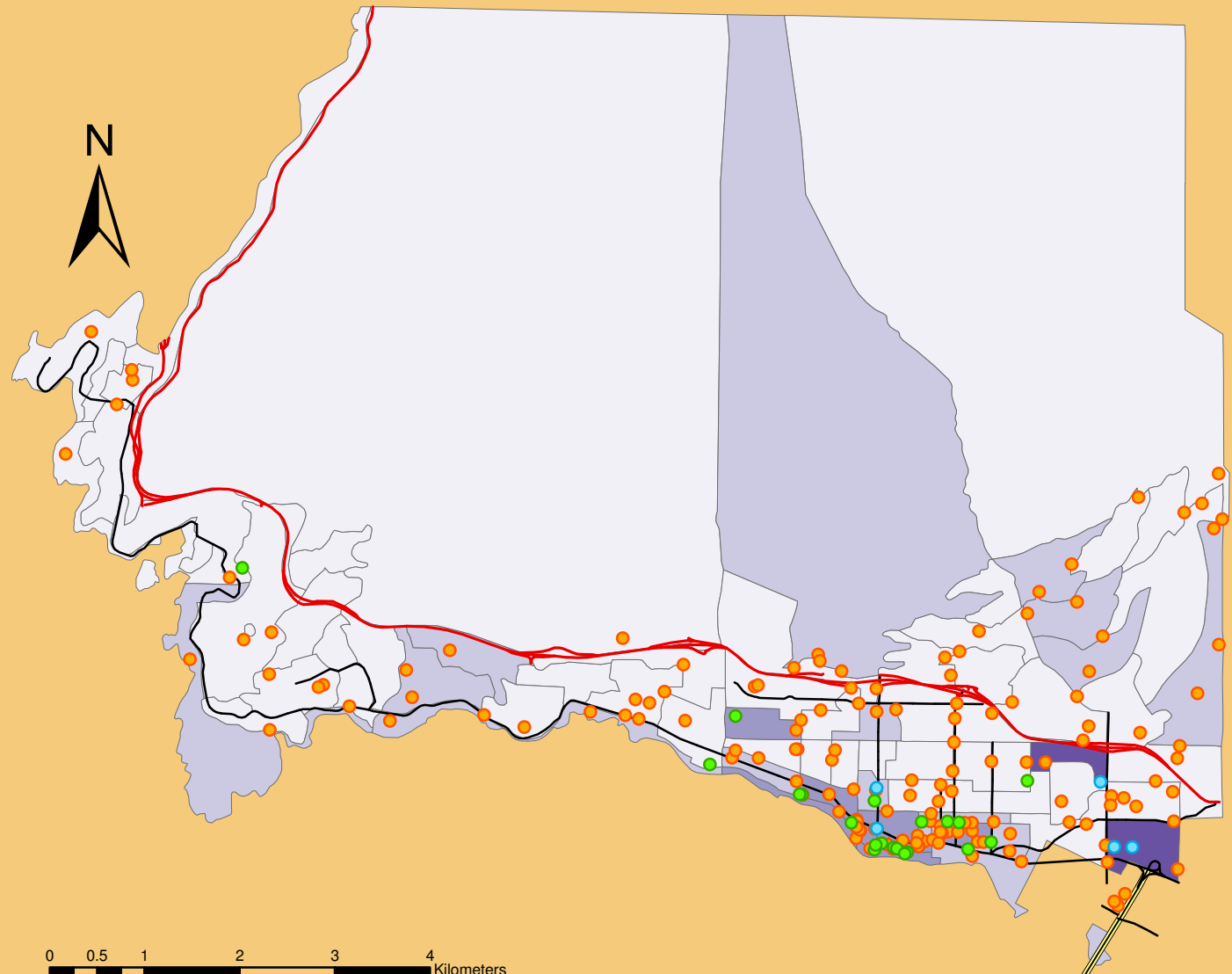
^cExcluding Bowen Island and Lions Bay.



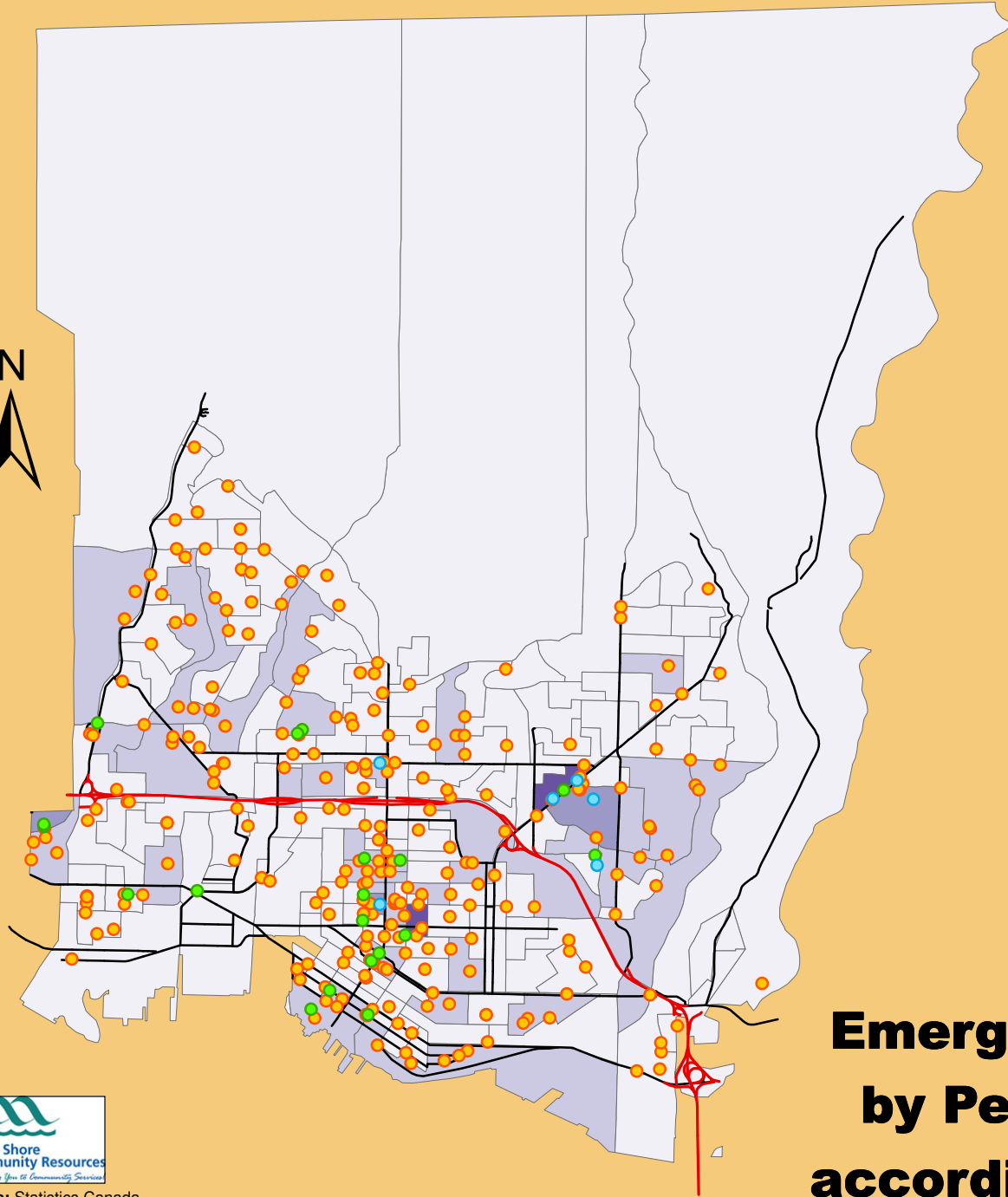
Number of emergency room visits* made by persons age 85 and older according to residence



*Lions Gate Hospital data: includes visits receiving no treatment and those going on to acute in-patient admission; excludes DOA and includes those expired in the Emergency Room.



Sources: Statistics Canada
 Vancouver Coastal Health Authority
 Population data provided by District of North Vancouver (Statistics Canada 2006 Census data)
 Neighbourhood boundaries provided by District of North Vancouver
 Streets data provided by District of North Vancouver
 Colour scheme selected from ColorBrewer
 Map prepared by North Shore Community Resources



Number of emergency room visits* made by persons age 85 and older according to residence

- 1 - 3
- 4 - 10
- > 10

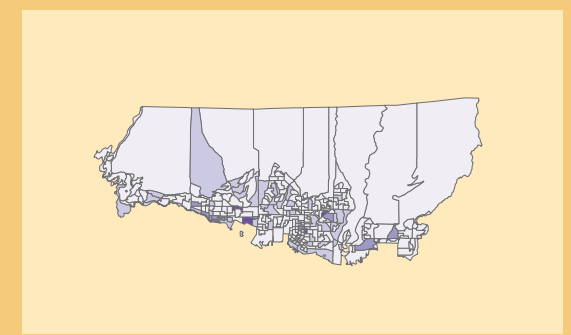
*Lions Gate Hospital data: includes visits receiving no treatment and those going on to acute in-patient admission; excludes DOA and includes those expired in the emergency room.

Number of persons age 85 and older within each DA^{e, c}

- 0 - 10
- 11 - 40
- 41 - 90
- 91 - 180

^eDissemination Area (DA): small geographic area composed of one or more neighbouring blocks, with a population of 400 to 700 persons.
^cExcluding Bowen Island and Lions Bay.

- TransCanada Highway
- Streets



Emergency Room Visits made by Persons Age 85 and Older according to Residence (2006) (Central North Shore, Burrard Inlet, BC)

Seniors in Communities Project, 2007-2008

North Shore Seniors Coalition



Sources: Statistics Canada
Vancouver Coastal Health Authority
Population data provided by District of North Vancouver (Statistics Canada 2006 Census data)
Neighbourhood boundaries provided by District of North Vancouver
Streets data provided by District of North Vancouver
Colour scheme selected from ColorBrewer
Map prepared by North Shore Community Resources

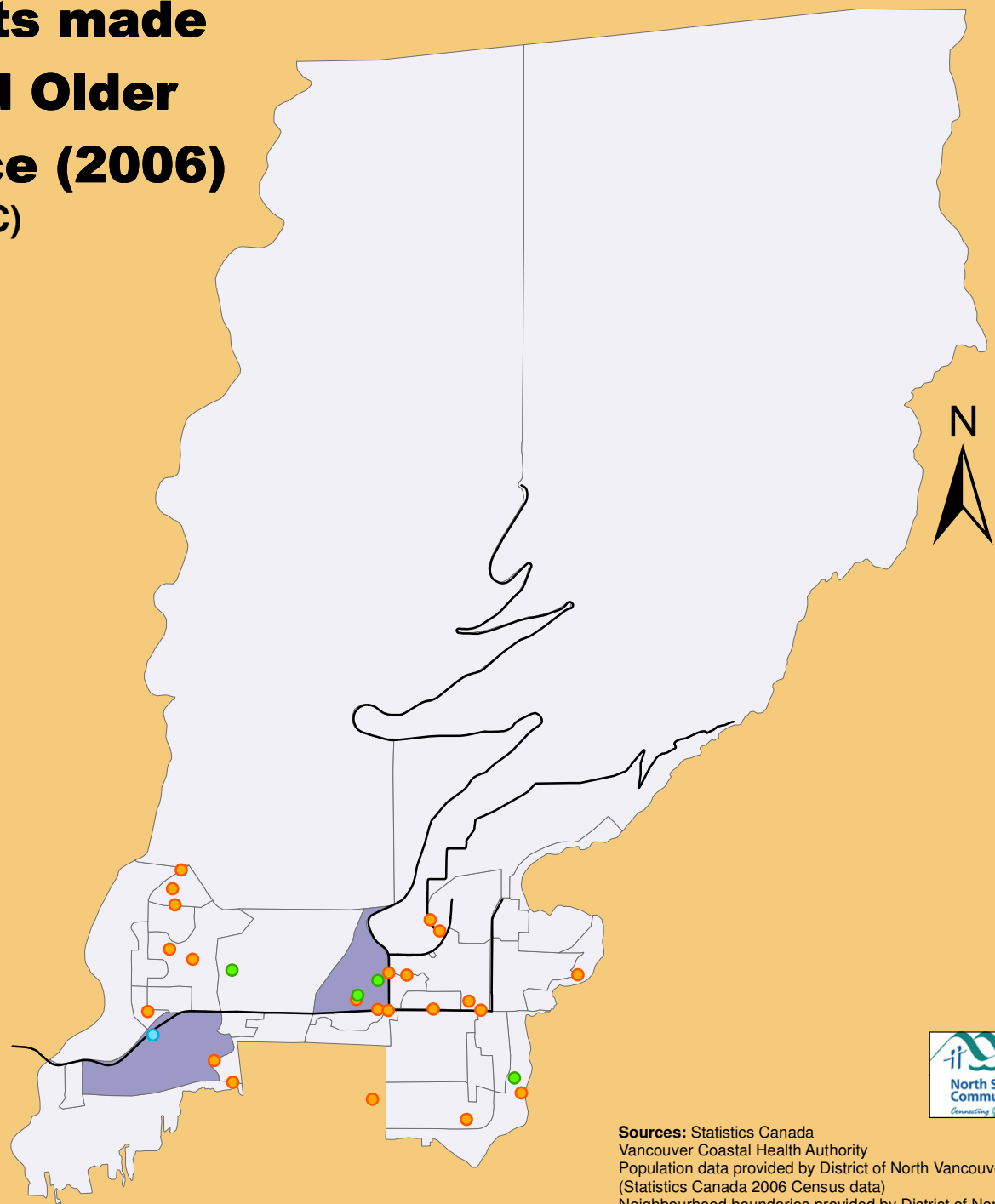
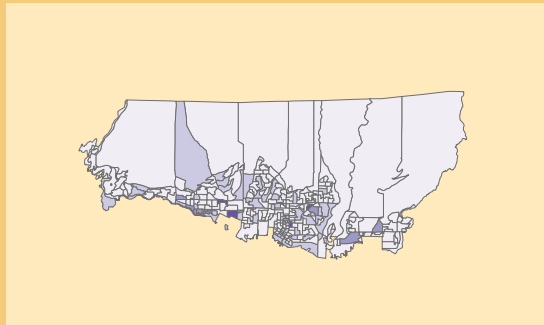


Emergency Room Visits made by Persons Age 85 and Older according to Residence (2006)

(East North Shore, Burrard Inlet, BC)

Seniors in Communities Project, 2007-2008

North Shore Seniors Coalition



Number of emergency room visits* made by persons age 85 and older according to residence

- 1 - 3
- 4 - 10
- > 10

*Lions Gate Hospital data: includes visits receiving no treatment and those going on to acute in-patient admission; excludes DOA and includes those expired in the emergency room.

Number of persons age 85 and older within each DA^{a, c}

- 0 - 10
- 11 - 40
- 41 - 90
- 91 - 180

^aDissemination Area (DA): small geographic area composed of one or more neighbouring blocks, with a population of 400 to 700 persons.

^cExcluding Bowen Island and Lions Bay.

— Streets



Sources: Statistics Canada
 Vancouver Coastal Health Authority
 Population data provided by District of North Vancouver
 (Statistics Canada 2006 Census data)
 Neighbourhood boundaries provided by District of North Vancouver
 Streets data provided by District of North Vancouver
 Colour scheme selected from ColorBrewer
 Map prepared by North Shore Community Resources